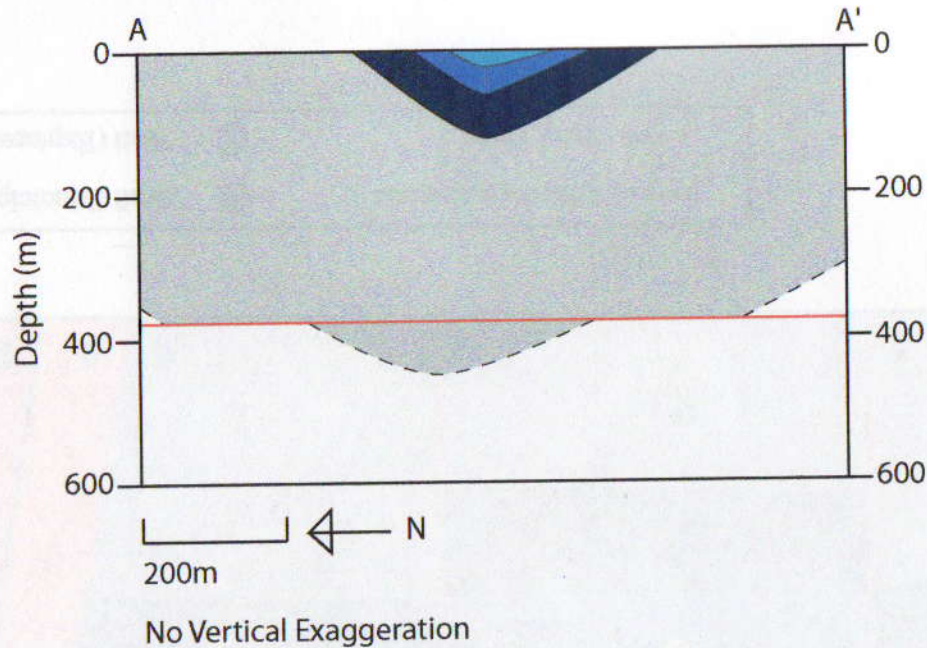


2. Cross Section A-A'



Lithologic Units

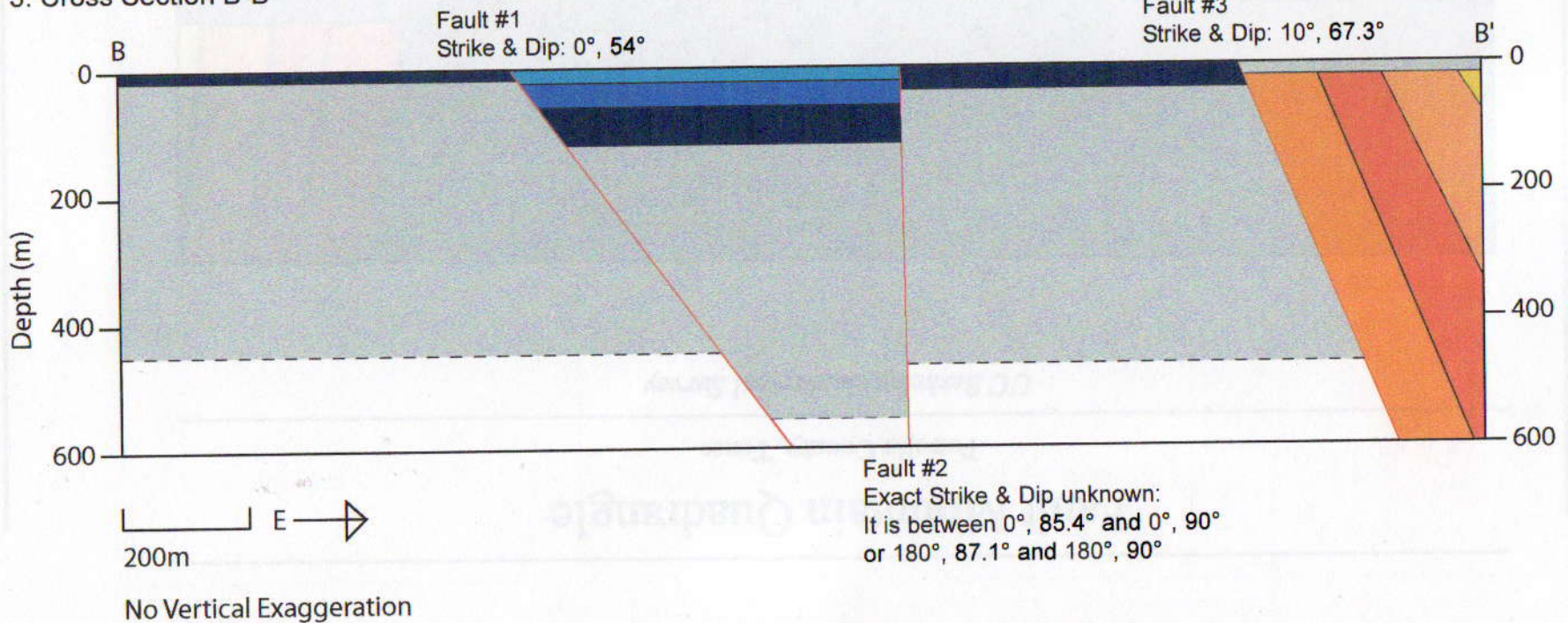
(Listed from youngest to oldest)



— Lithologic Contact

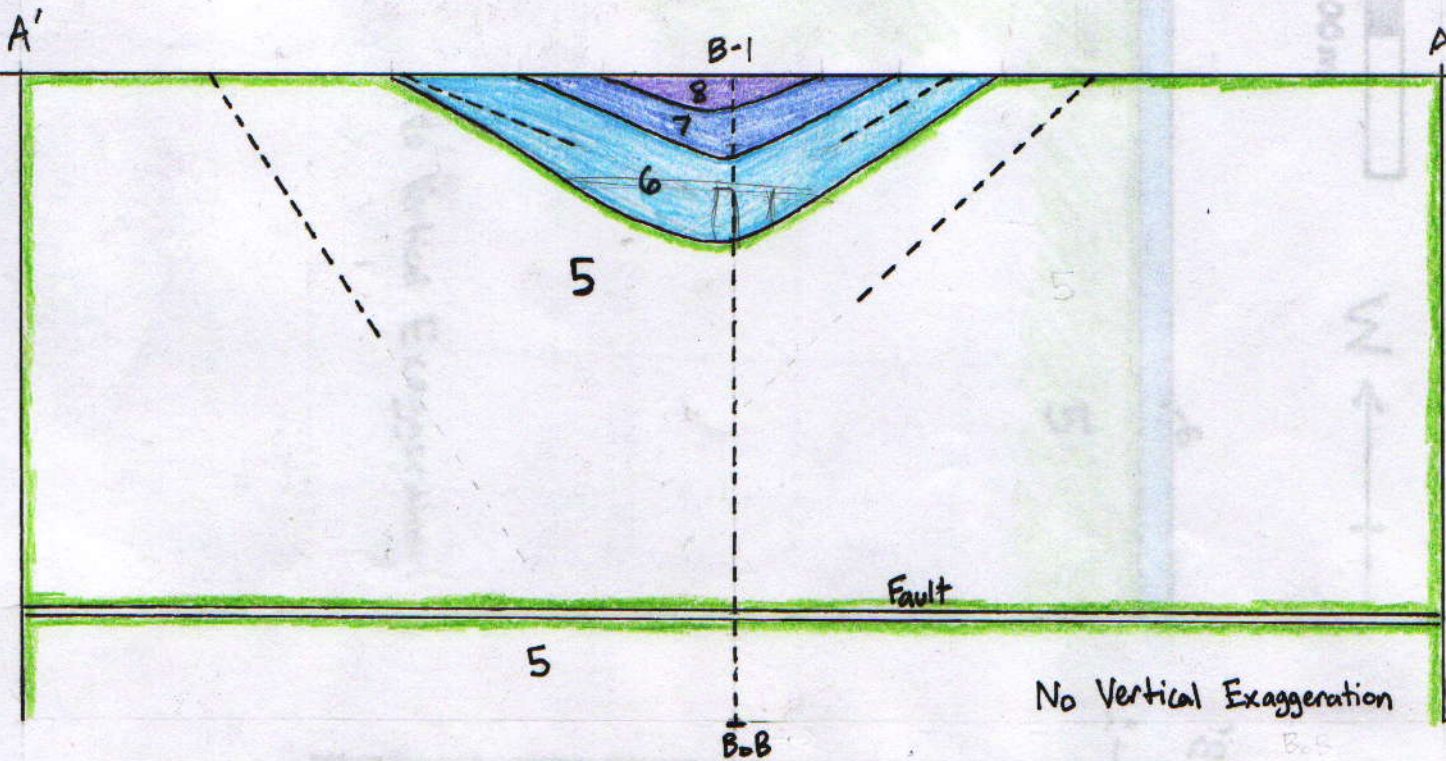
— Fault Trace

3. Cross Section B-B'





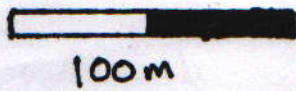
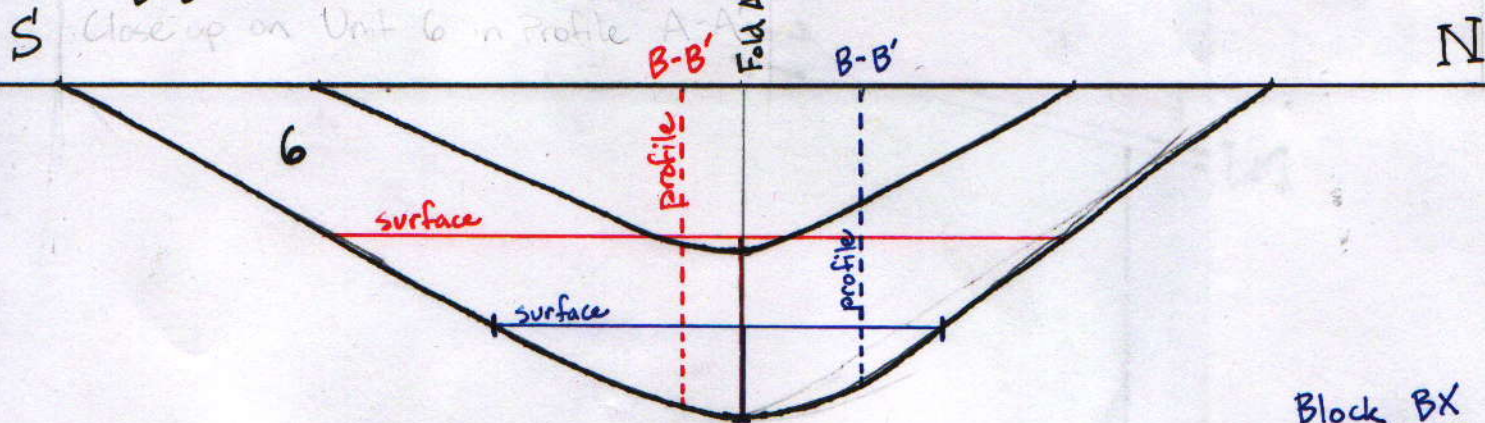
- lithologic boundary
- - - bore hole or dip
- == Fault



Calculation of Apparent Dip

Close Up of Unit 6 in Profile A-A'

Used to determine depth of 5-6 boundary in blocks BX and YZ along profile B-B'



No Vertical Exaggeration

Block BX

Max depth 33m
B-B' depth 21m

Block YZ

Max depth 63m
B-B' depth 58m



W ← | → E

- lithologic boundary
- - - bore hole
- == fault

B

6

X

8

Y

5

7

6

5

BoB

No Vertical Exaggeration

