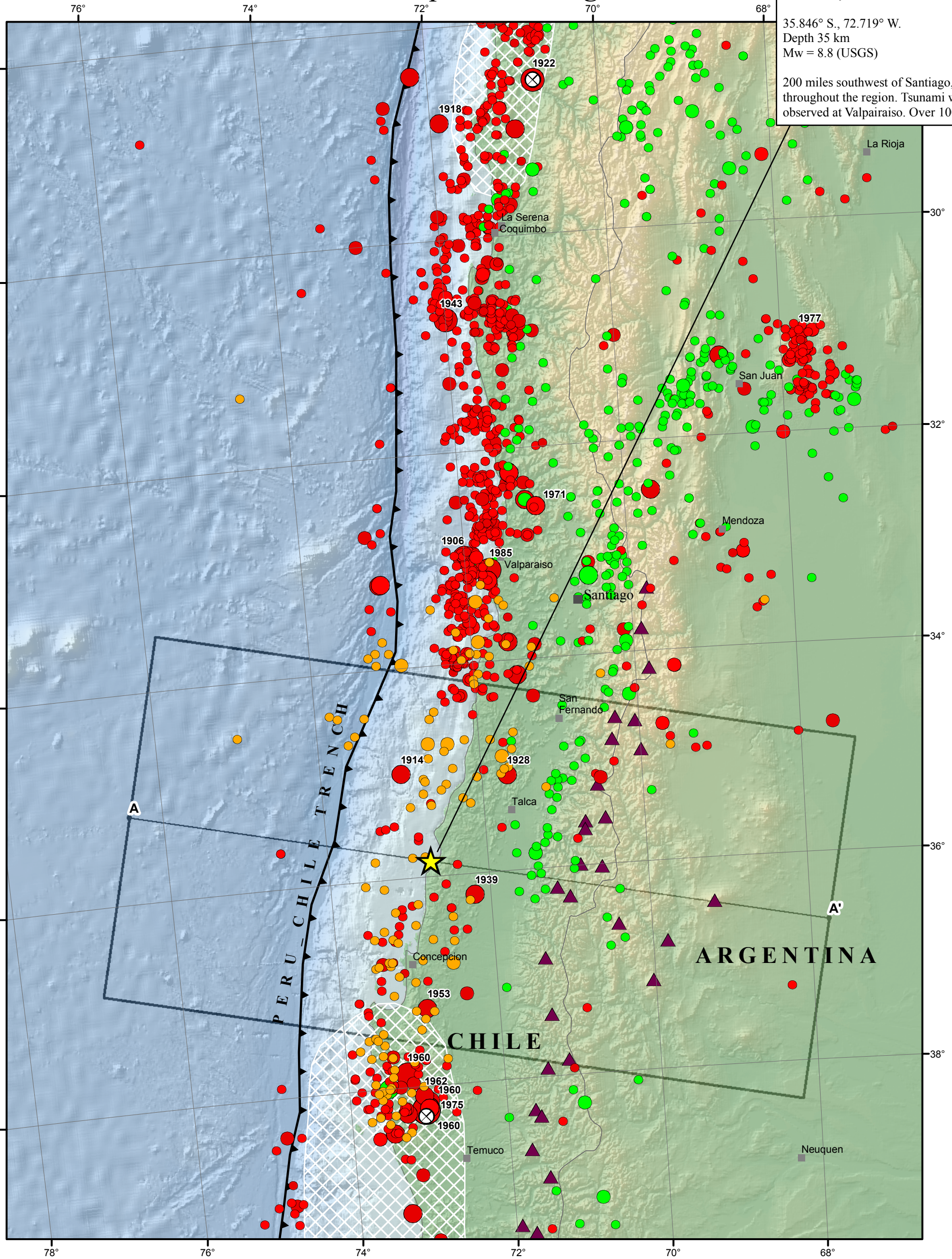
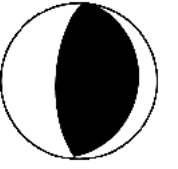


Epicentral Region

Offshore Maule, Chile
27 February 2010 6:34:14 UTC
35.846° S., 72.719° W.
Depth 35 km
Mw = 8.8 (USGS)
200 miles southwest of Santiago, Chile, Intensity VIII-IX felt throughout the region. Tsunami with wave height up to 2.5 m observed at Valparaiso. Over 1000 people killed.



Note on earthquakes: From 1900 - 1963, earthquakes shown are from Centennial Catalog, magnitudes greater than 5.5. From 1964 - 2002, earthquakes are from HDF catalog, magnitudes greater than 4.5. From 2003 to present, earthquakes are from NEIC, magnitudes greater than 4.5.

Scale 1:4,000,000

